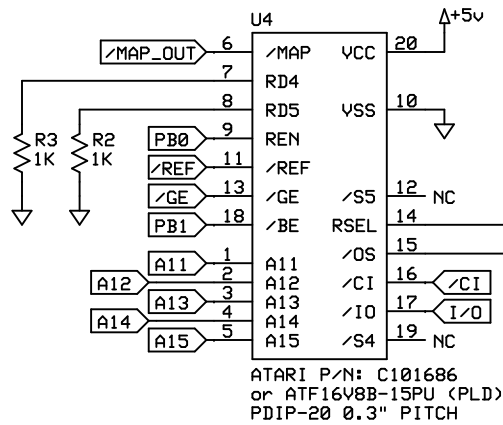
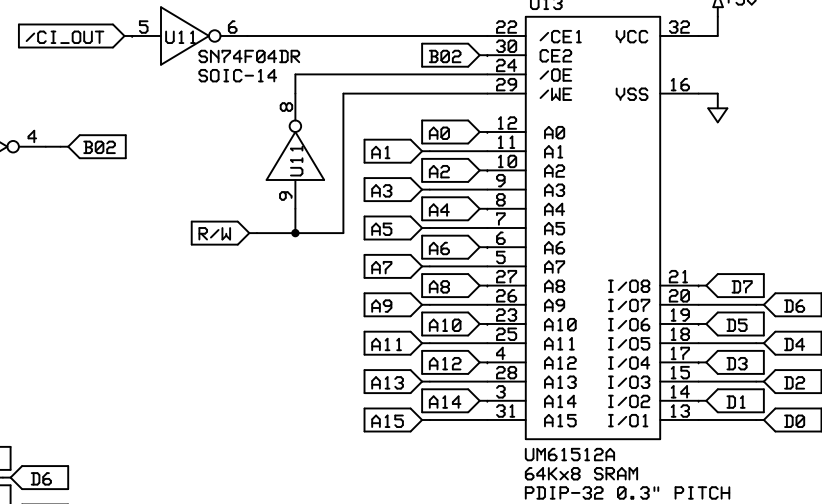
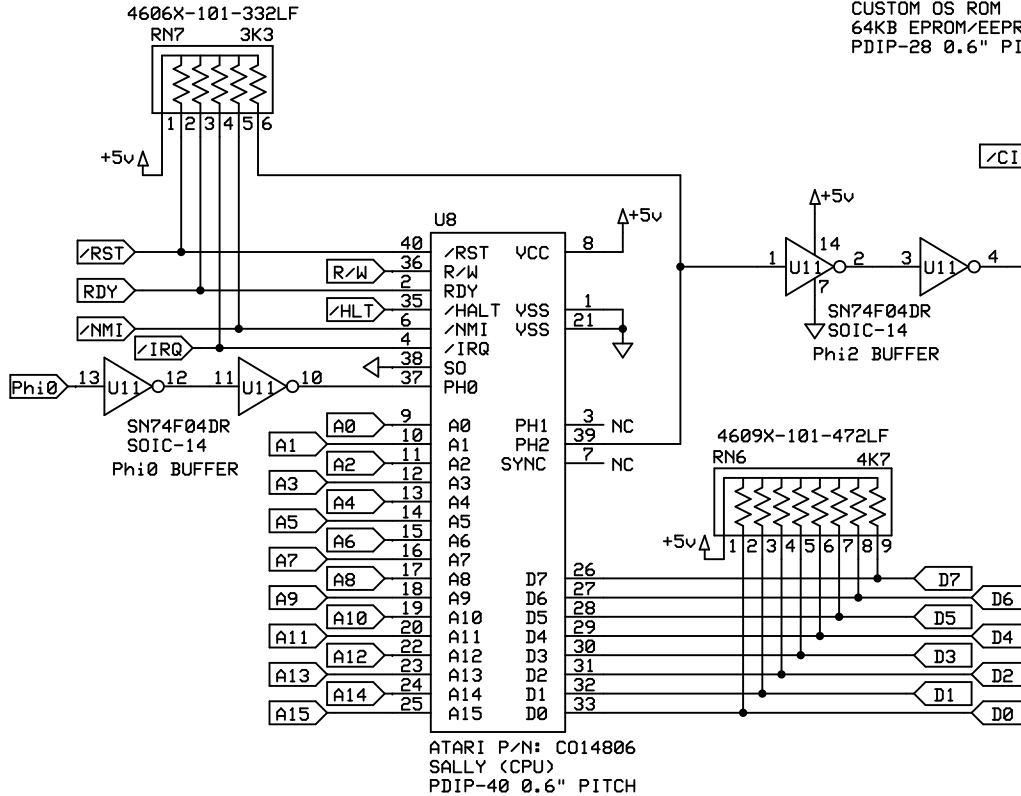
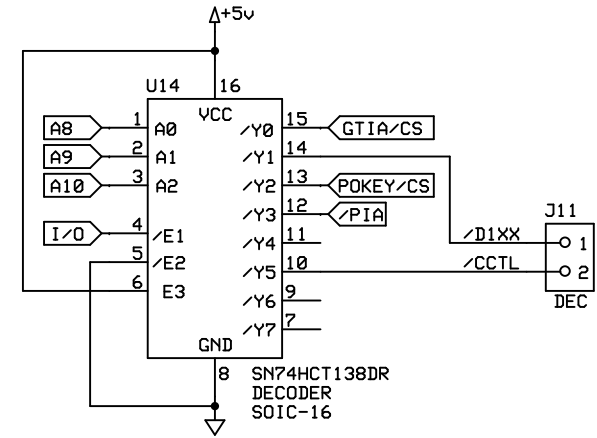
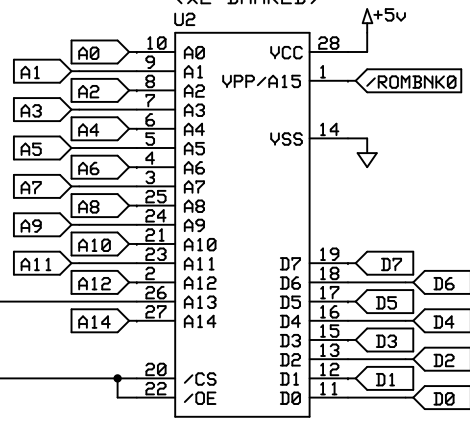


STOCK XEGS MMU CONFIGURATION



XEGS ROM CONFIGURATION (x2-BANKED)



NOTE: THE 576NUC+ BASE DESIGN BEGAN LIFE AS A VARIANT OF THE ATARI XEGS - ALBEIT GREATLY ENHANCED. DUE TO ITS XEGS HERITAGE, A STOCK XEGS MMU AND OS ROM CAN BE USED, BUT WITH REDUCED CAPABILITY. IF THE 64x8 SRAM & VGATE CHIP ARE SOCKETED, STACKED SOCKETS WILL BE REQUIRED FOR U8 & U10. SYSTEM CLOCK ABBREVIATIONS: PH0=Phi0, PH1=Phi1, PH2=Phi2, B02=BUFFERED Phi2

ATARI 576NUC+ CONSOLE

The Brewing Academy

By: MacRorie/mytek

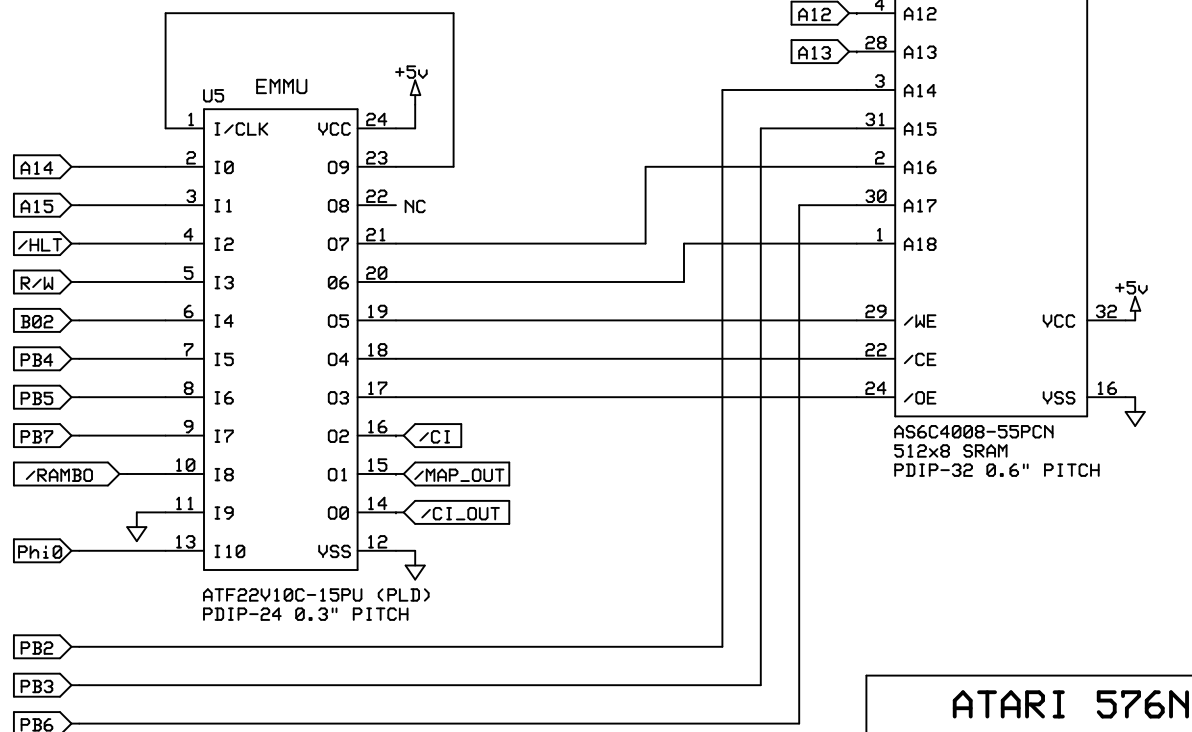
VERSION 1.2

July 6th 2021

CPU/MEMORY

ORIGINALLY BASED ON:
 HiassofT's 512K SRAM Extension
www.horus.com/~hias/atari/

Modified for 100% RAMBO Banking by Jurgen
www.van-radecke.de/STUFF/tfhh-HW-info.pdf



/RAMBO LOW = 512KB RAMBO (+64KB BASE RAM = 576KB TOTAL)
 /RAMBO HIGH = 256KB COMPYSHOP (+64KB BASE RAM = 320KB TOTAL)
 COMPYSHOP USES INDEPENDENT ANTIC/CPU ACCESS

ATARI 576NUC+ CONSOLE

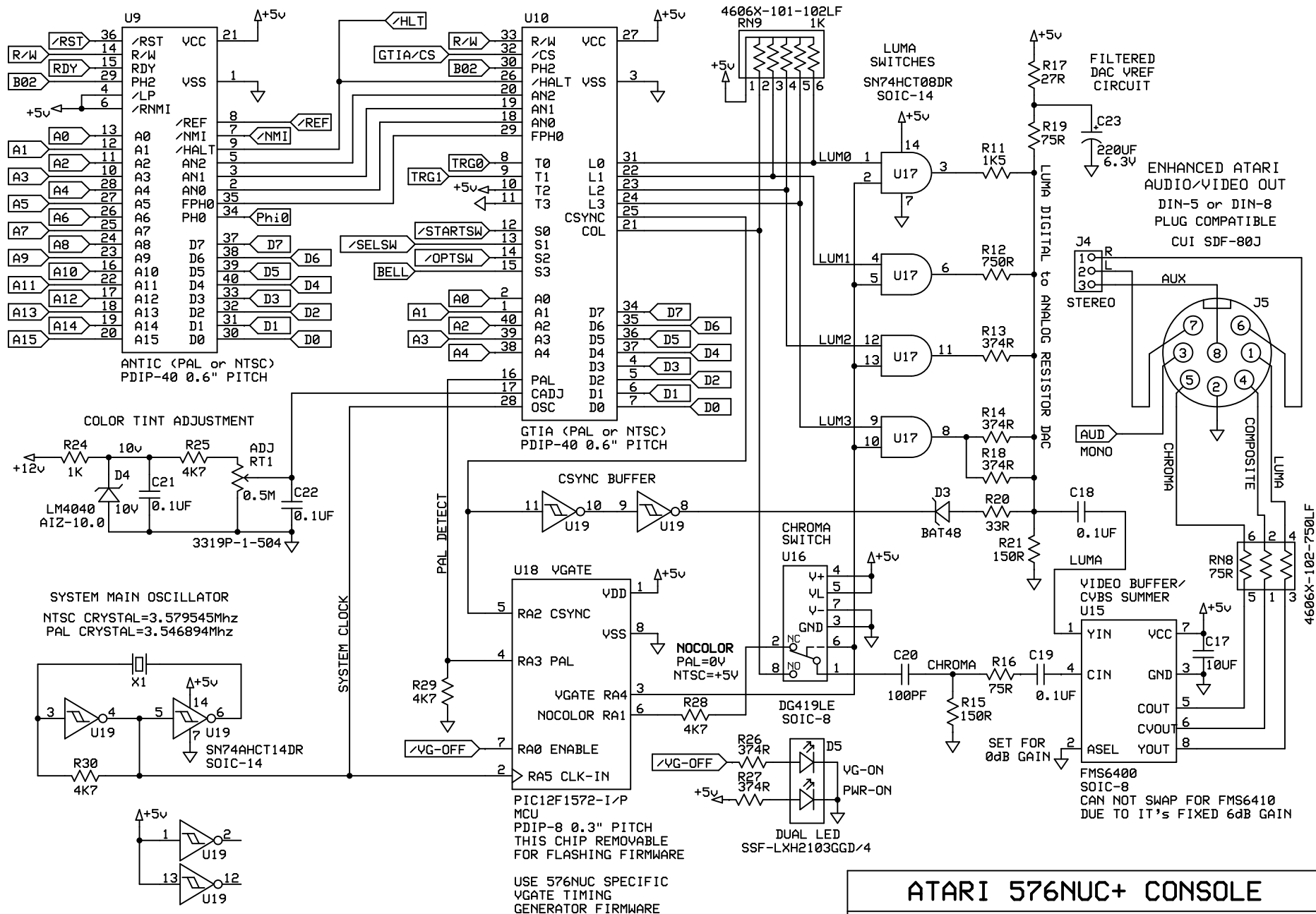
The Brewing Academy

By: MacRorie/mytek

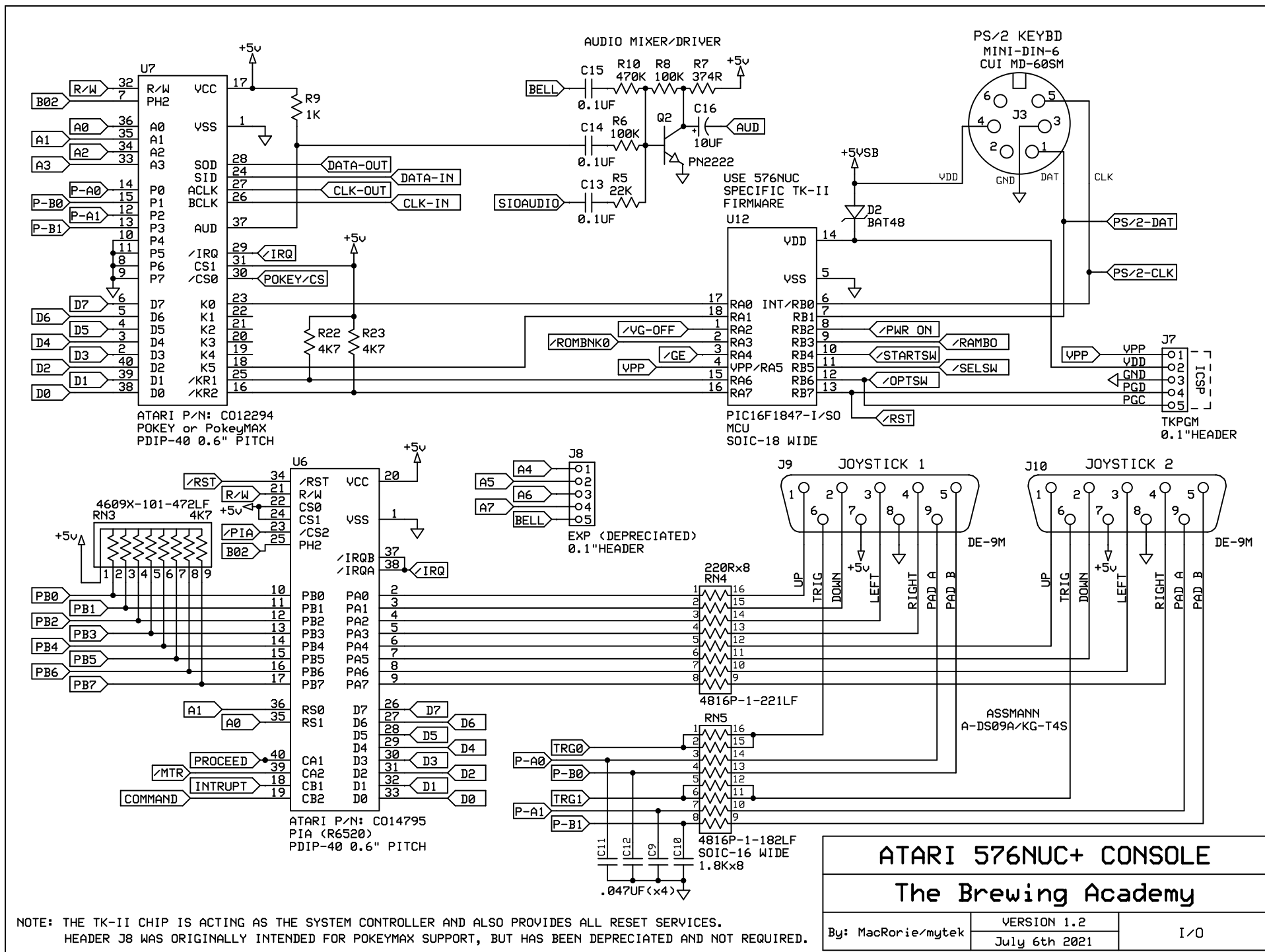
VERSION 1.2

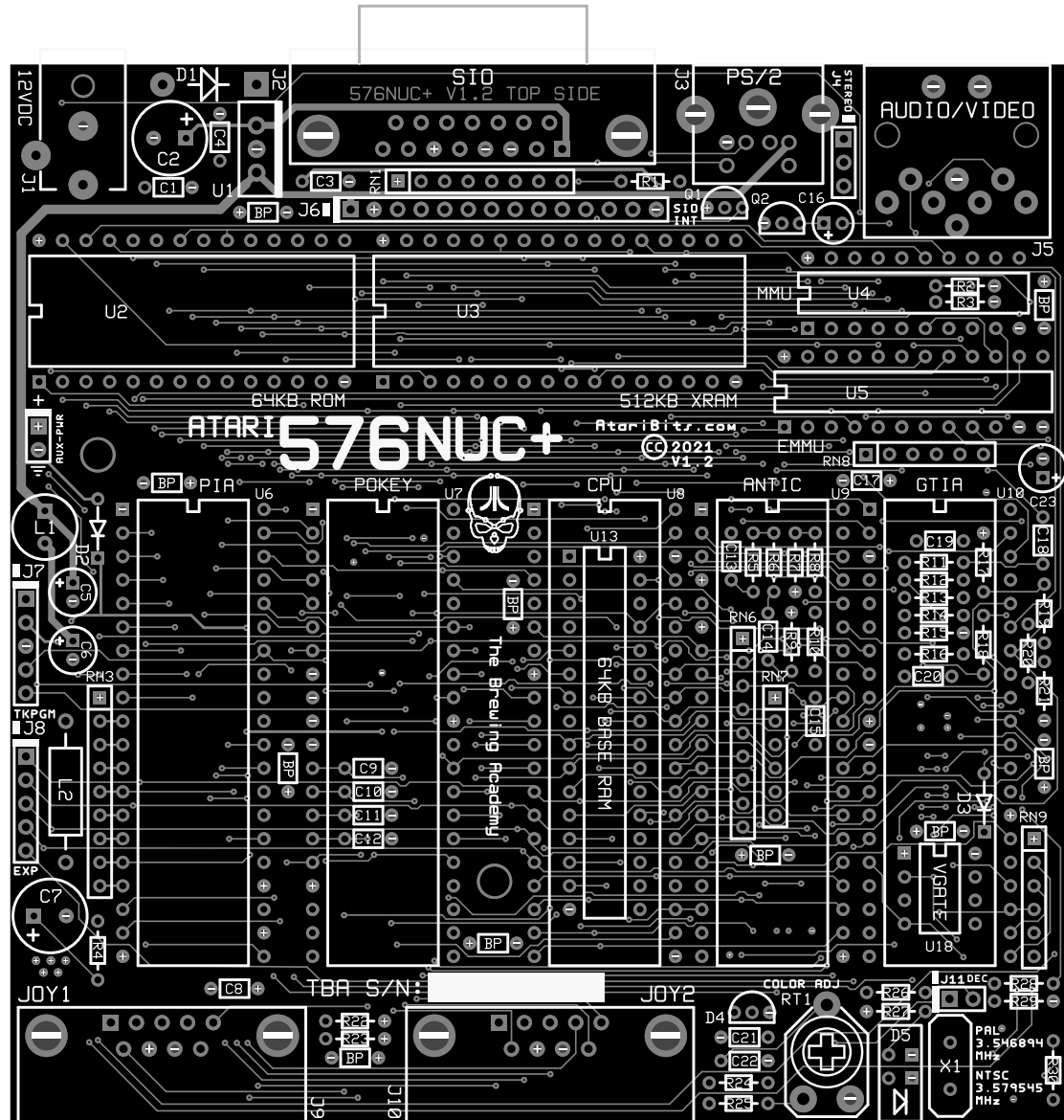
July 6th 2021

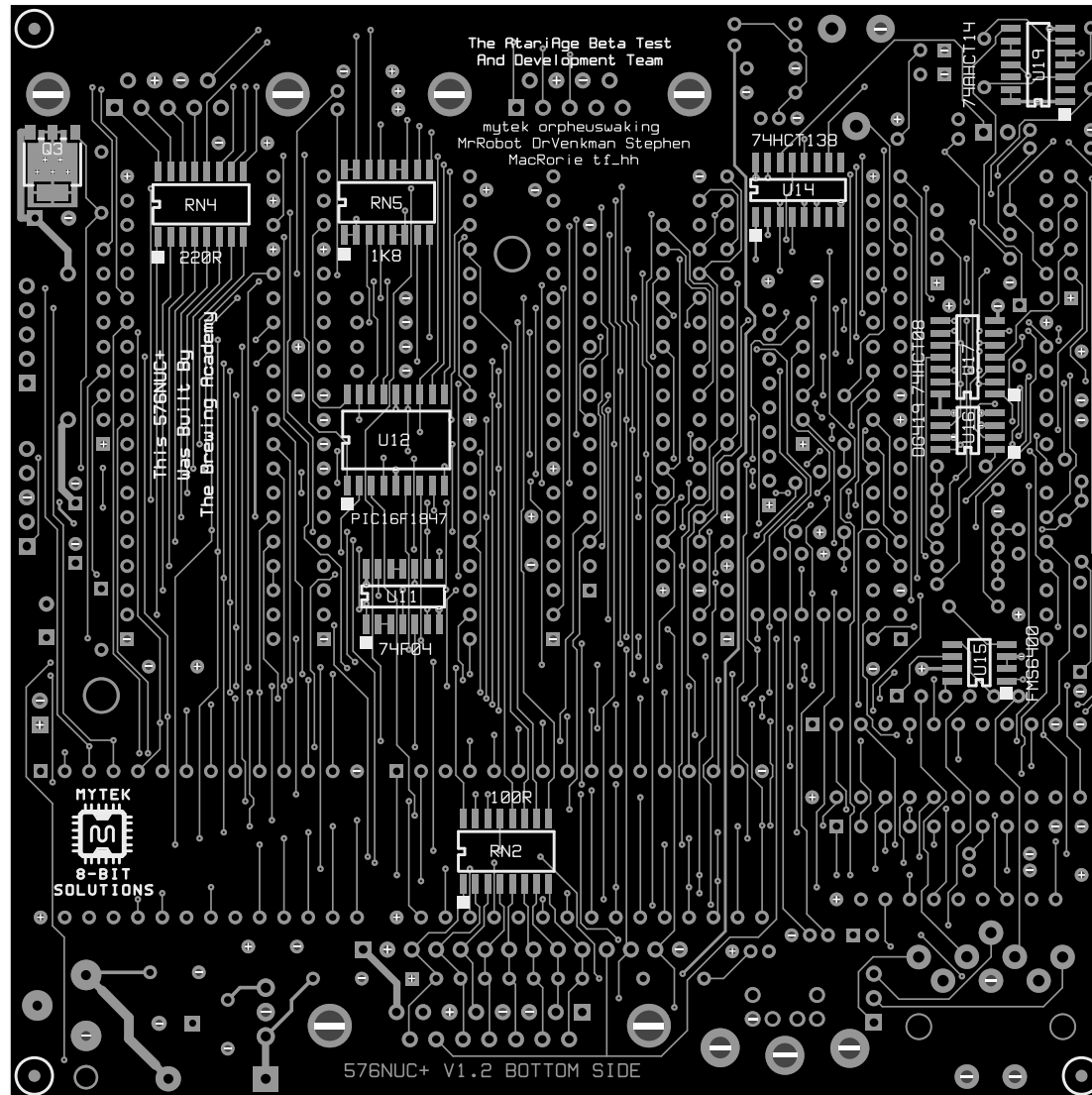
EXTENDED RAM



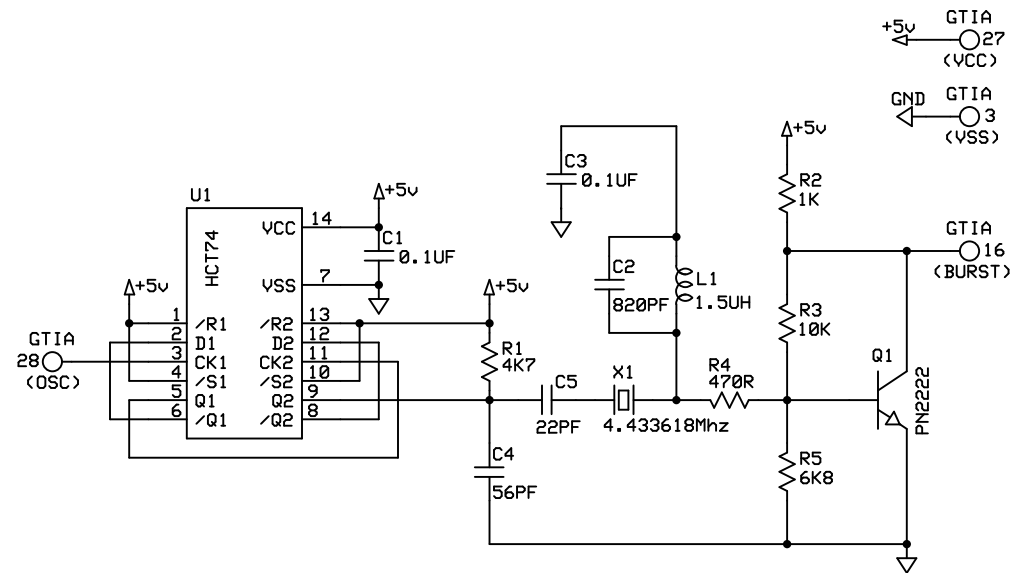
ATARI 576NUC+ CONSOLE		
The Brewing Academy		
By: MacRorie/mytek	VERSION 1.2	VIDEO
	July 6th 2021	







SYNCED PAL COLOR BURST OSCILLATOR GTIA PIGGYBACK



PALburst COLOR CLK BOARD

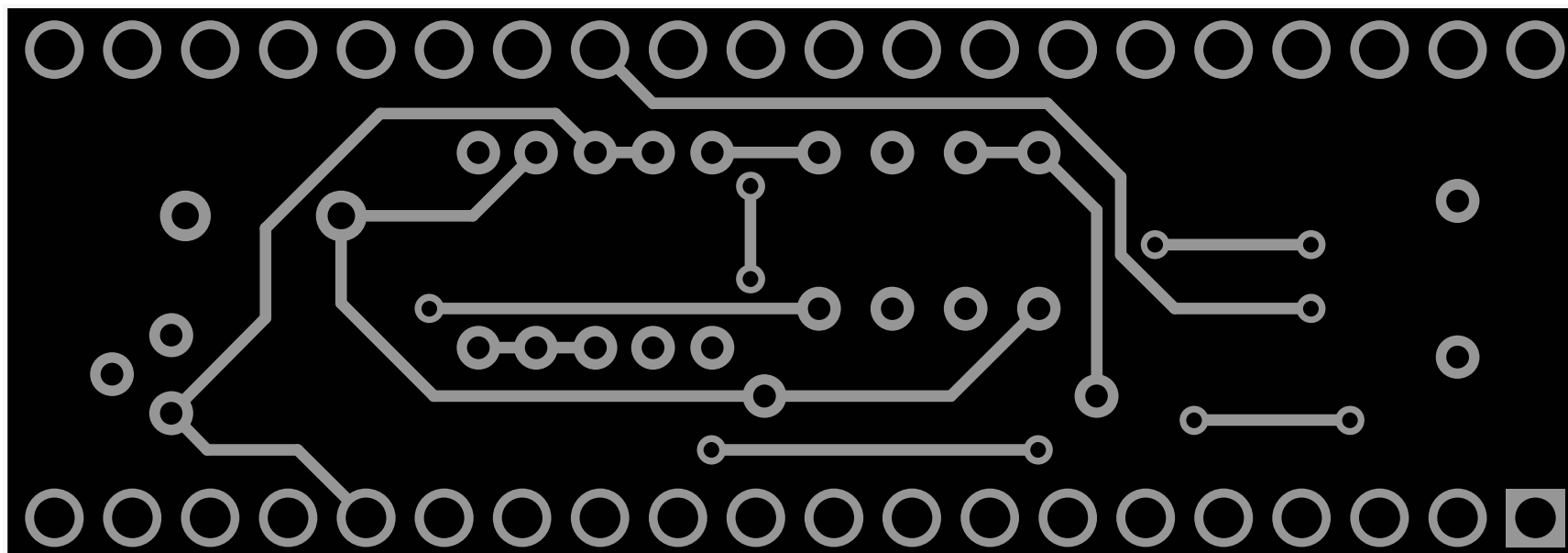
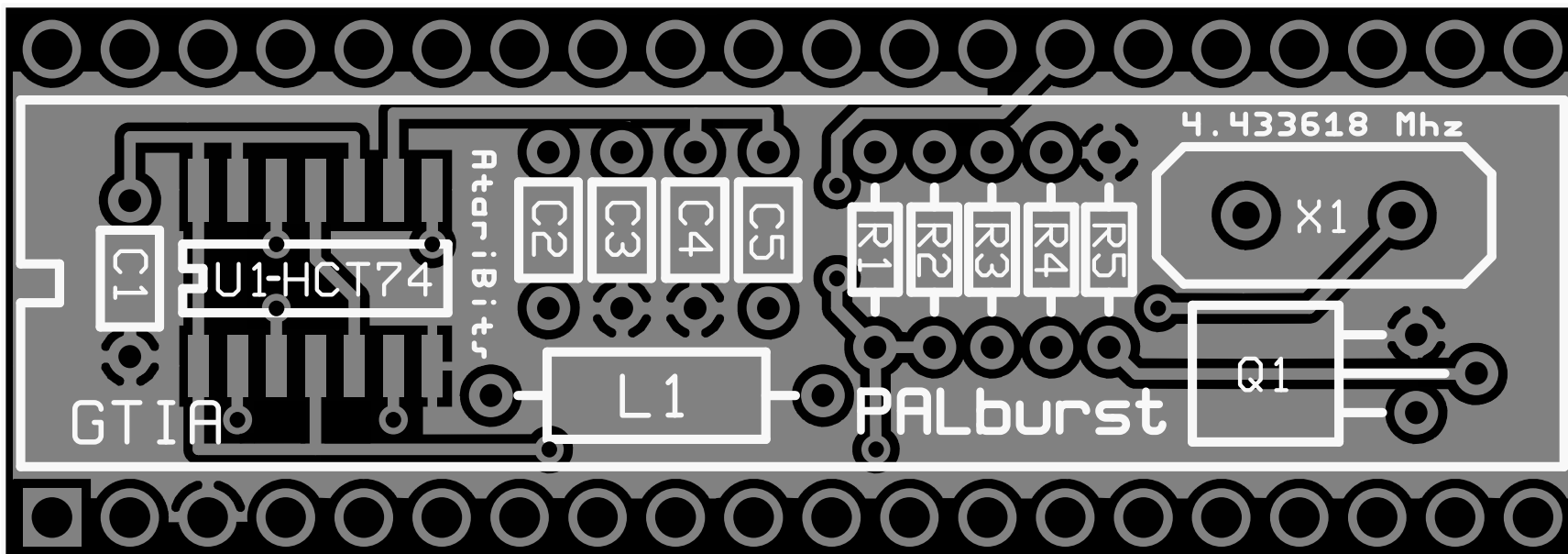
The Brewing Academy

By: MacRorie/mytek

VERSION 1.0

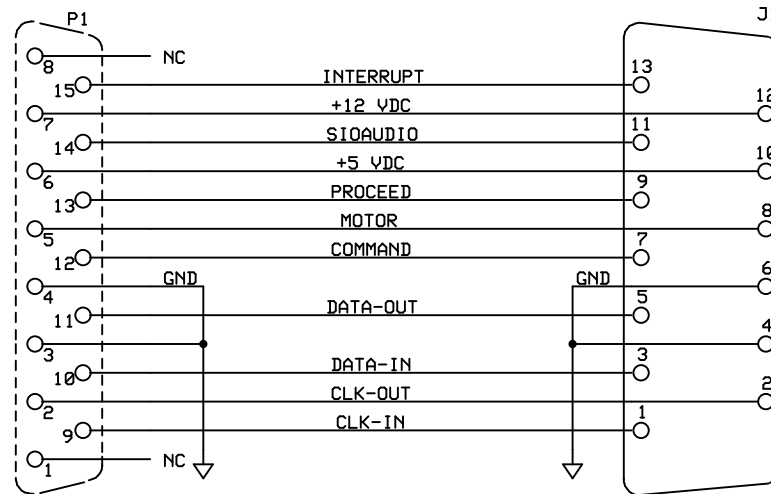
July 6th 2021

PAL COLOR CLK



TO: 576NUC+ SIO PORT

STANDARD SIO JACK



RIGHT ANGLE DA-15F
ASSMANN A-DF 15 A/KG-T4S
SHOWN FROM REAR VIEW
(SAME AS FRONT VIEW OF MATING PART)

ATARI SIO2Dsub Adapter

The Brewing Academy

By: MacRorie/mytek

VERSION 1.0

July 6th 2021

SIO ADAPTER

